



Royal Derby Hospital Group O Negative Red Cell Issues and Wastage- How do we do it???

- O neg stock- a maximum of 17 units in stock at any time.
- Emergency O neg- 2 labelled units available for collection in the issue fridge which all relevant clinical areas have access to (2 further units in the lab).
 - There are 3 other satellite Blood Fridges in the hospital which do not carry any emergency O neg.
- Stock control
 - The Blood Bank Laboratory has a culture of active stock management. A review of available stock by blood group is performed regularly each day on iLAB LIMS.

An 'expiring stock list' is printed from iLAB LIMS every day which lists all red cells and platelets both issued and in stock which are due to expire in the next few days . All units on this list (including the O neg) are returned to stock if issued and unlikely to be transfused to that particular patient within 3 days of expiry. The O neg units that are 1-3 days to expiry are then placed with the O pos to highlight that they are near to expiry and BMS staff are encouraged to issue them to an O pos patient to avoid wastage.

- 2 sample policy

The Royal Derby Hospital had fully implemented a 2 sample policy by 2012. With this came the ability to electronically issue blood which in turn reduced the need to use emergency O neg in many urgent situations including in the Emergency Department for some cases.

- Group and Screen Reports

The Royal Derby Hospital reports all of its group and screen results on the Trusts patient administration system (currently ICM but moving to Lorenzo in the near future). This helps the clinical area to know how many samples are needed to provide blood and if there is a current sample that could possibly be used for electronic issue.

Below are some tables and graphs taken from the Blood Stocks Management System showing our O neg red cell issues and wastage compared to a cluster of 12 hospitals with a similar distance to their NHSBT site and have a very high red cell usage. The blue highlighted hospitals are not a good comparison however as they are either a larger, busier site or are registered as a Trust rather than a hospital.

Cluster Red Cell Issues

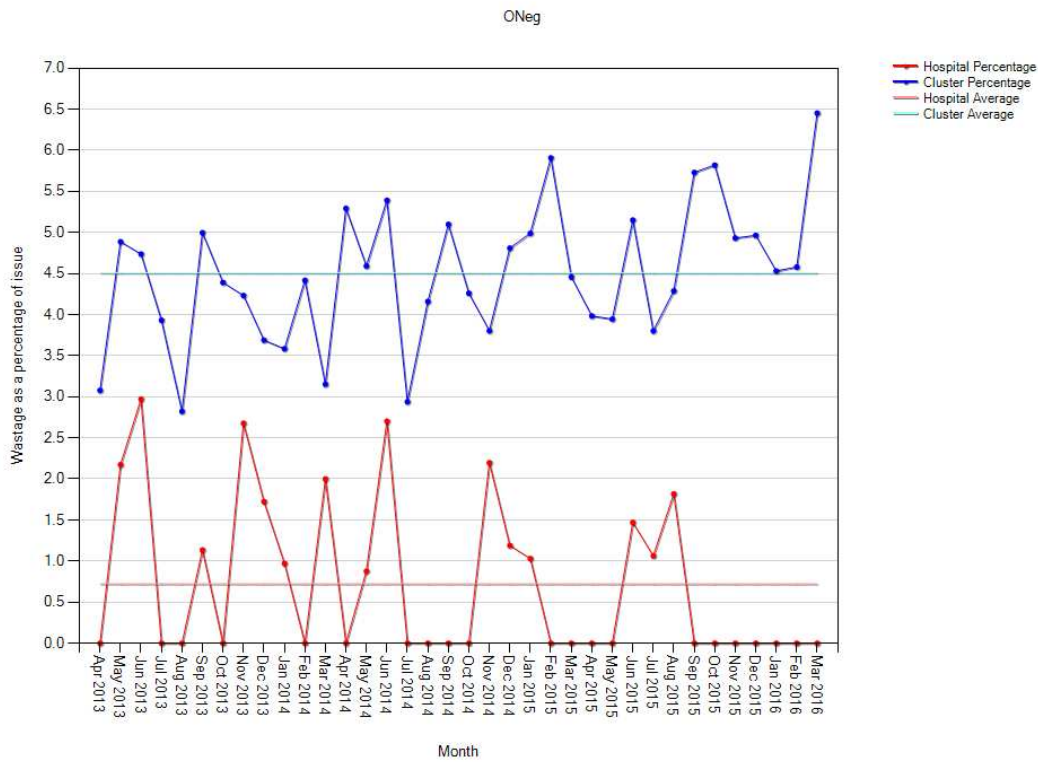
Hospital Name	A , B & O	O Neg	A , B & O WAPI	ONeg WAPI	Entries
Royal Derby Hospital	156	24	0.44	0.72	36
Blackpool Victoria Hospital	539	84	1.68	2.11	415
Royal United Hospital/ Bath Labs	445	85	1.51	2.66	36
Nottingham University Hospital - City Campus	464	116	1.12	2.38	33
New Cross Hospital	260	118	0.72	4.46	29
Hull Royal Infirmary	617	145	1.68	3.73	563
Royal Stoke University Hospital	1305	262	2.64	4.58	103
Nottingham University Hospital - Queens Campus	930	272	3.19	6.55	31
University Hospitals Coventry & Warwickshire	769	294	1.54	4.72	27
University College Hospital	1184	344	1.38	2.21	751

Hospital Name	O +	O -	A +	A -	B +	B -	AB +	AB -	Total	% O-
New Cross Hospital	13541	2648	12936	2573	3539	958	643	679	37517	7.06
Royal United Hospital/ Bath Labs	10447	3193	10734	2641	2015	363	638	130	30161	10.59
Royal Derby Hospital	13690	3324	12023	3132	2582	464	920	187	36322	9.15
Hull Royal Infirmary	13614	3892	12940	3037	2678	598	733	412	37904	10.27
Blackpool Victoria Hospital	12277	3975	9937	2889	2340	713	579	447	33157	11.99
Nottingham UH-QMC	10414	4153	9180	2789	2059	563	512	231	29901	13.89
Nottingham UH-City Campus	16239	4870	13201	3470	2973	788	715	269	42525	11.45
Royal Stoke University Hospital	18675	5721	16777	4524	3366	447	1096	300	50906	11.24
South Tees Hospitals	16345	5903	13296	3590	3054	467	1069	288	44012	13.41
UH Coventry & Warwickshire	17725	6233	16006	3796	5214	1024	1543	58	51599	12.08
Royal London Hospital	23174	9656	13045	2198	7609	1977	1297	402	59358	16.27
University College Hospital	30328	15577	21813	6618	7278	4480	1408	459	87961	17.71

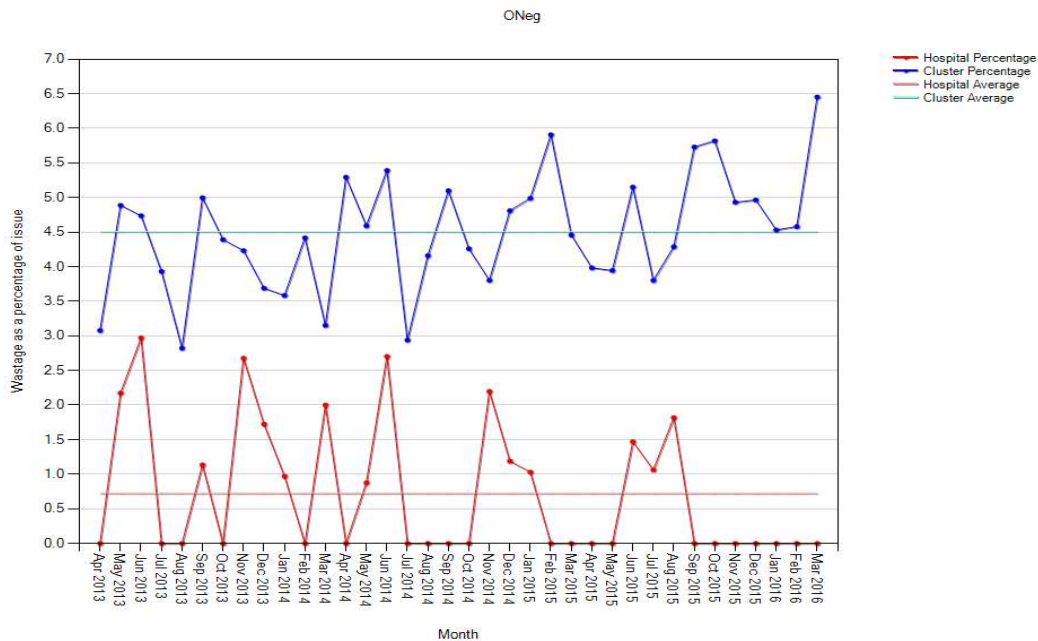
South Tees Hospitals	1365	433	3.20	7.34	674
Royal London Hospital	2916	938	5.06	9.71	36

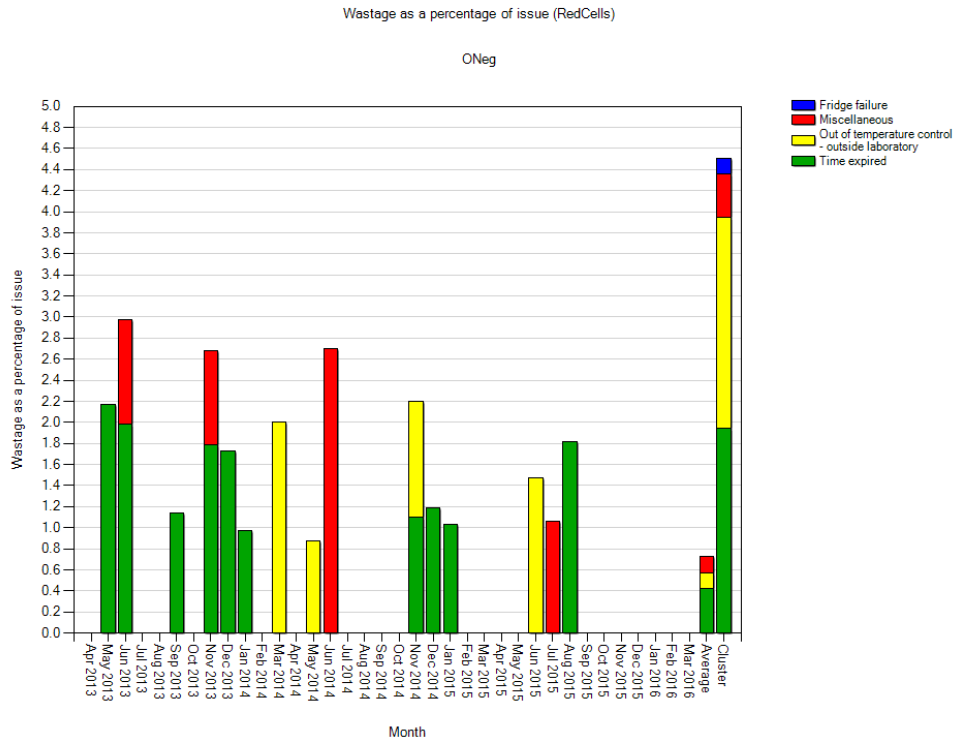
Cluster Red Cell Wastage

Wastage as a percentage of issue (RedCells)



Wastage as a percentage of issue (RedCells)





For further information please contact Heather Rankin, Transfusion Practitioner, Royal Derby Hospital heather.rankin@nhs.net